



Personal Protection Equipment



We're serious about safety.



There are many factors that make a job successful – production, efficiency, customer satisfaction – but none are more important than your safety. And keeping you out of harm's way during your welding and cutting is ESAB's top priority.

That's why we offer a full-range of personal protection equipment. From head to toe, you can work with confidence, knowing you have the industry's latest protective technology on your side. Plus, we've added comfort and style that you won't find in any other protective equipment. It's this quality and reliability you can only expect from the global leader of welding and cutting solutions.



Table of Contents

- Helmets **3-8**
- Respiratory Equipment **9**
- Safety Glasses and Goggles **10-11**
- Welding Clothing **12-13**
- Head Protection **13**
- Welding Gloves **14-15**
- Welding Accessories **16**
- Notes **17-18**

Helmets

New-Tech™ ADC Plus Family

The New-Tech™ ADC Plus series of auto-darkening welding helmets features the latest technology. The new “Angular Dependence Compensation” Plus (ADC) ensures that the selected shade covers the full width and height of the LCD screen, while the addition of the Plus offers improved color definition and contrast throughout the cartridge. The New-Tech™ ADC Plus helmets offer a wide viewing area, giving the welder a feeling of increased space awareness. The New-Tech™ ADC Plus models are very lightweight and well-balanced. The head gear can be set to fit each individual user for maximum comfort. The helmet shell is designed to give maximum protection to the face but also to the neck and ears. The area in front of the mouth is made larger to ensure a good flow of fresh air and low levels of carbon dioxide. The cartridges are powered by solar cells and automatically activated by daylight, so there is no need to switch on or off. ESAB’s series of New-Tech™ ADC Plus helmets are ANSI approved.



ESAB’s New-Tech™ ADC Plus welding helmets can be used with most hard hats.



New-Tech™ 6-13 XL ADC Plus

0700 000 305

The New-Tech™ 6-13 XL ADC Plus can be used for almost any welding application. The shade level can be adjusted from DIN 6 to DIN 13, making the helmet very versatile. The helmet features a grinding mode which allows the ADF screen to be switched off for grinding and has a sensitivity and delay function. The New-Tech™ 6-13 XL ADC Plus is equipped with the ADC Plus technology which will ensure a solid shade level even when viewing the lens at an angle, i.e. positional welding, while also offering increased color and light contrast. The XL lens measures 3.77 x 2.96 in. (96 x 68.5 mm) offering an increased field of vision for the welder. The unique silver gloss finish on the exterior shell of the New-Tech™ ADC Plus helps to reflect heat and increases the helmet’s resistance to high temperatures. This also helps to reduce temperature build-up within the helmet.

New-Tech™ 9-13 ADC Plus

0700 000 281

The New-Tech™ 9-13 ADC Plus offers our latest ADC Plus technology which ensures a solid shade level even when viewing the lens at an angle, i.e. positional welding. The cartridge also has improved color and light contrast allowing the welder to distinguish colors through the lens in an open and activated state. The settings, such as shade level DIN 9-13, sensitivity and delay are made from the outside of the helmet. The New-Tech™ 9-13 ADC Plus is suitable for almost all applications – TIG, MIG/MAG, MMA, and gas welding/cutting. The unique silver gloss finish on the exterior shell of the New-Tech™ ADC Plus helps to reflect heat and increases the helmet’s resistance to high temperatures. This also helps to reduce temperature build-up within the helmet.



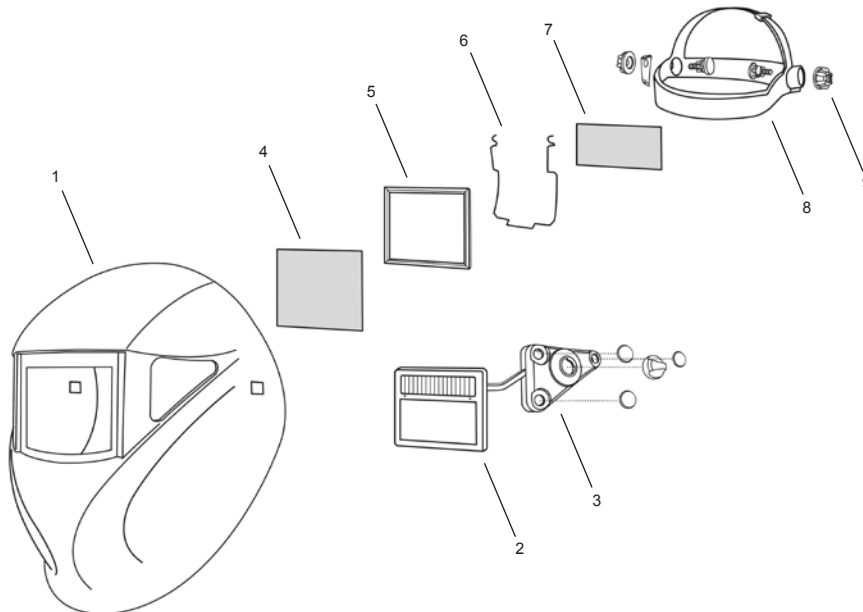
Spares for New-Tech™ 6-13 XL ADC Plus (Fig.1)

1	Helmet Shell Silver	0700 000 269
2	Cartridge	0700 000 270
3	Adjustment Knob Kit	0700 000 223
4	Front Cover Lens	0700 000 227
4	Front Cover Lens CR39	0701 416 354
5	Supporting Frame	0700 000 220
6	Metal Locking Spring	0700 000 221
7	Inside Cover Lens	0700 000 268
8	Sweat Band	0700 000 226
9	Headgear Complete	0700 000 222

Spares for New-Tech™ 6-13 ADC Plus / 9-13 ADC Plus (Fig. 1)

1	Helmet Shell Silver	0700 000 211
2	Cartridge	0700 000 201
3	Adjustment Knob Kit	0700 000 223
4	Front Cover Lens	0700 000 227
4	Front Cover Lens CR39	0701 416 354
5	Supporting Frame	0700 000 220
6	Metal Locking Spring	0700 000 221
7	Inner Cover Lens	0700 000 228
8	Sweat Band	0700 000 226
9	Headgear Complete	0700 000 222

Spares for New-Tech™ 6-13 XL ADC Plus / 9-13 ADC Plus Fig. 1



Helmets

Origo™-Tech 9-13

The new, stylish high-tech helmet design from ESAB. The new shell is available in 2 striking high gloss colors, yellow or black. The helmet features the ESAB comfort headgear, while the lightweight shell offers superior face, head, ear and neck protection, which allows for welding in all positions. The ESAB variable shade ADF uses the latest technology and has proven reliability. The ADF is screw retained and sits in a fully moulded light seal cradle, which also creates a slight convex curve on the front spatter lens for extra security and strength. The helmet is delivered in an ESAB display box, fully assembled and ready to use. ESAB's series of Origo™-Tech helmets are ANSI approved.



Origo™-Tech 9-13

The Origo™-Tech 9-13 features an external shade adjustment between DIN 9 and DIN 13. The delay and sensitivity can be adjusted from the inside. The Origo™-Tech 9-13 is suitable for MIG/MAG, MMA and TIG (over 20 amps).

Origo™-Tech 9-13-Black
Origo™-Tech 9-13-Yellow

0700 000 296
0700 000 298

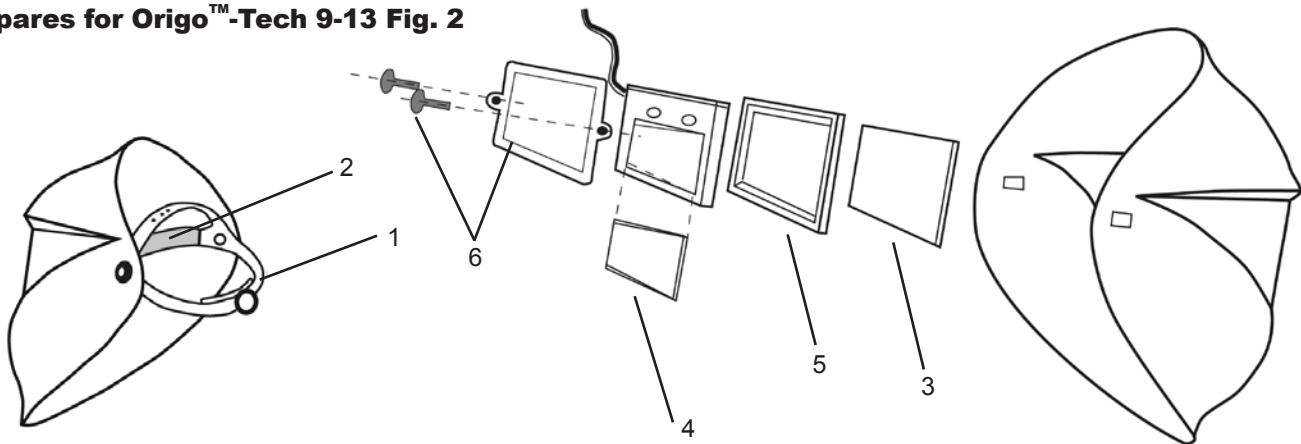
For additional information, request product data sheet PPE-1000.



Spares for Origo™-Tech 9-13 (Fig. 2)

1	ESAB Head Gear Pro	0700 000 243
2	Sweat Band Head Gear Pro	0700 000 244
3	Front Cover Lens Origo™-Tech	0700 000 245
4	Inside Cover Lens Origo™-Tech	0700 000 246
5	ESAB 9-13 ADF Cradle	0700 000 235
6	Lens Retainer with Screws	0700 000 237

Spares for Origo™-Tech 9-13 Fig. 2



Origo™-Tech 9-13 Prepared for Air

Available July 2010

The Origo™-Tech 9-13 Prepared for Air is delivered fully assembled and ready to attach to the Origo™ Air Unit. The unit includes: Origo™-Tech helmet, head gear, air duct, and head and face seal.

Origo™-Tech 9-13 Prepared for Air-Black	0700 000 300
Origo™-Tech 9-13 Prepared for Air-Yellow	0700 000 301

Origo™ Air

Available July 2010

The Origo™ Air is a battery powered respiratory unit designed to fit the Origo™-Tech and Globe-Arc welding helmet. The unit includes: power unit, battery, charger, waist belt, comfort pad, hose, Proban hose cover, and P3 filter.

Origo™ Air including Air Hose	0700 002 100
Origo™ Tech 9-13 Complete Unit-*Black	0558 009 775
Origo™ Tech 9-13 Complete Unit-*Yellow	0558 009 776

* Includes Origo™ Air Unit

Origo™-Tech Prepared for Air Excluding ADF

Available July 2010

The Origo™ Air can be adapted to any standard Origo™-Tech helmet that has been previously purchased. We offer the Origo™-Tech helmet prepared for Air Excluding the ADF cartridge. This means the user must then remove the ADF from the existing helmet and fit it to the new shell to complete the system.

Origo™-Tech Prepared for Air Excluding ADF-Black	0700 000 302
Origo™-Tech Prepared for Air Excluding ADF-Yellow	0700 000 303

Helmets

Globe-Arc

The Globe-Arc helmet has been designed to provide the ideal protection for all kinds of metal working. The inner lens, in combination with the outer lens, provides full protection against IR, UV and visible light making it suitable for welding. The inner lenses are available in a number of different shades: DIN 2, DIN 3, and DIN 5. The helmet can therefore also be used for grinding, gas cutting, gas welding, and plasma cutting.



Globe-Arc

The Globe-Arc is a unique design in flip-front welding and grinding helmets. The visor provides effective protection from UV and IR radiation when the visor is both open and closed, and is available in different shade levels. The helmet is equipped with a strong and comfortable head gear.

Globe-Arc Shade 7
Globe-Arc Shade 10
Globe-Arc Shade 11

0700 000 308
0700 000 947
0700 000 943

For additional information, request product data sheet PPE-1001.

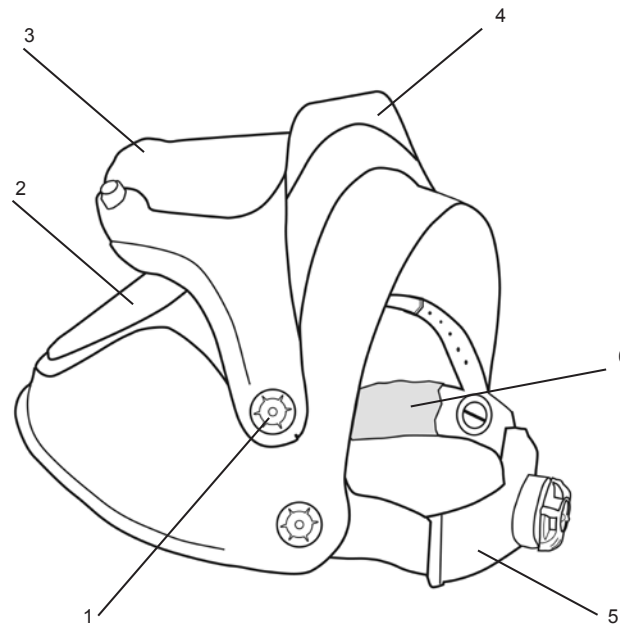
100%
SATISFACTION
GUARANTEE

2
YEAR
WARRANTY

Spares for Globe-Arc (Fig. 3)

1	Hinge Set	0700 000 267
2	Large Inner Visor Globe-Arc DIN 2	0700 000 239
2	Large Inner Visor Globe-Arc DIN 3	0700 000 240
2	Large Inner Visor Globe-Arc DIN 5	0700 000 241
3	Outer Flip Visor Globe-Arc DIN 5	0700 000 242
3	Outer Flip Visor Globe-Arc DIN 8	0700 000 247
3	Outer Flip Visor Globe-Arc DIN 10	0700 000 248
4	Flip Up Globe-Arc Holder	0700 000 249
5	Headgear Globe-Arc	0700 000 243
6	Sweat Band	0700 000 244

Spares for Globe-Arc Fig. 3



Globe-Arc Prepared for Air

Available July 2010

The Globe-Arc Prepared for Air is delivered fully assembled and ready to attach to the Origo™ Air Unit. The unit includes: Globe-Arc helmet, head gear, air duct, and head and face seal.

Globe-Arc Shade 10 Prepared for Air	0700 000 935
Globe-Arc Shade 11 Prepared for Air	0700 000 936

Origo™ Air

Available July 2010

The Origo™ Air is a battery powered respiratory unit designed to fit the Origo™ -Tech and Globe-Arc welding helmets. The unit includes: power unit, battery, charger, waist belt, comfort pad, hose, Proban hose cover, and P3 filter.

Origo™ Air unit including Air Hose	0700 002 100
Globe-Arc Shade 10 Complete Unit	0558 009 777
Globe-Arc Shade 11 Complete Unit	0558 009 278

Respiratory Equipment

Origo™ Air

Available July 2010



The Origo™ Air is a battery powered respiratory unit designed to fit the Origo™-Tech and Globe-Arc welding helmets. The unit provides clean, filtered air to increase the comfort and safety for the welder. The Origo™ Air is delivered complete with an 8-hour battery, P3 filter, comfort pad, waist belt, and an air hose with a fitted Proban hose cover. This unit is supplied with an intelligent charger, which ensures a prolonged life time of the battery by reducing the risk of over charging. The Origo™ Air is equipped with a low-flow alarm, which will give an audible signal when the filter is blocked or the battery power is running low. The complete system is comfortable, lightweight, and durable.

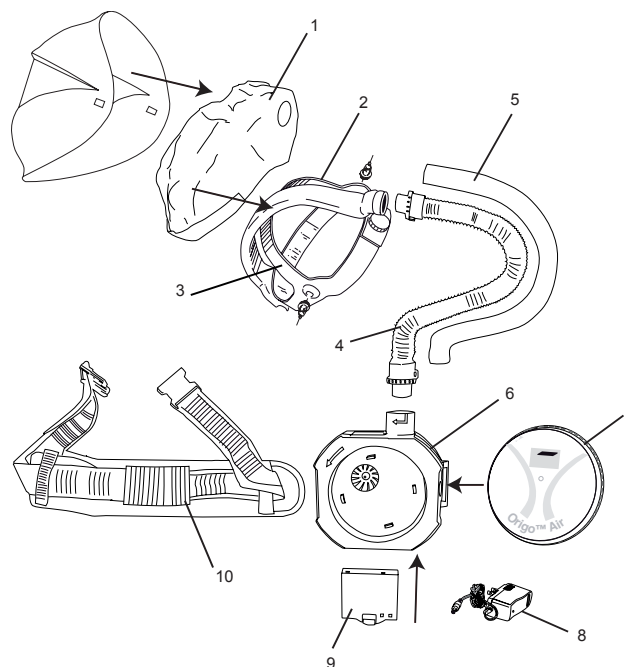
Origo™ Air Unit including Air Hose	0700 002 100
Origo™-Tech 9-13 Helmet Complete Unit-Black	0558 009 776
Origo™-Tech 9-13 Helmet Complete Unit-Yellow	0558 009 775
Globe-Arc Shade 10 Complete Unit	0558 009 777
Globe-Arc Shade 11 Complete Unit	0558 009 778

Spares for Origo™ Air (Fig. 4)

1 Face Seal	0700 002 101
2 Air Duct	0700 002 102
3 Head Gear	0700 000 243
4 Air Hose	0700 002 103
5 Proban Hose Cover	0700 002 104
6 Motor Unit	0700 002 105
7 Filter	0700 002 106
8 Charger Adapter	0700 002 107
9 Battery	0700 002 108
10 Waist Belt	0700 002 109



Spares for Origo™ Air Fig. 4



For additional information, request product data sheet PPE-1003.

Safety Glasses and Goggles



ESAB Pro Safety Glasses

These stylish safety glasses are used for drilling, chipping, and metalworking. They have a sporty style, soft to the touch, and have a lightweight wraparound, including a neck cord. They are extremely flexible and durable, and are available in four different lens configurations. All lens configurations provide protection against dangerous UV radiation. All eyewear meets ANSI Z87.1 standards.



ESAB Pro Clear

0700 012 013

The clear lens is suitable when working indoors, providing general eye protection.



ESAB Pro Smoked

0700 012 014

The smoked lens is suitable when working in strong ambient light.



ESAB Pro Amber

0700 012 015

The amber (yellow lens) enhances the light. This is suitable when the ambient light is not sufficient.



ESAB Pro Shade 5

0700 012 016

The DIN 5 shade lens provides protection not only against IR/UV light but also against the visible light during gas welding/cutting.

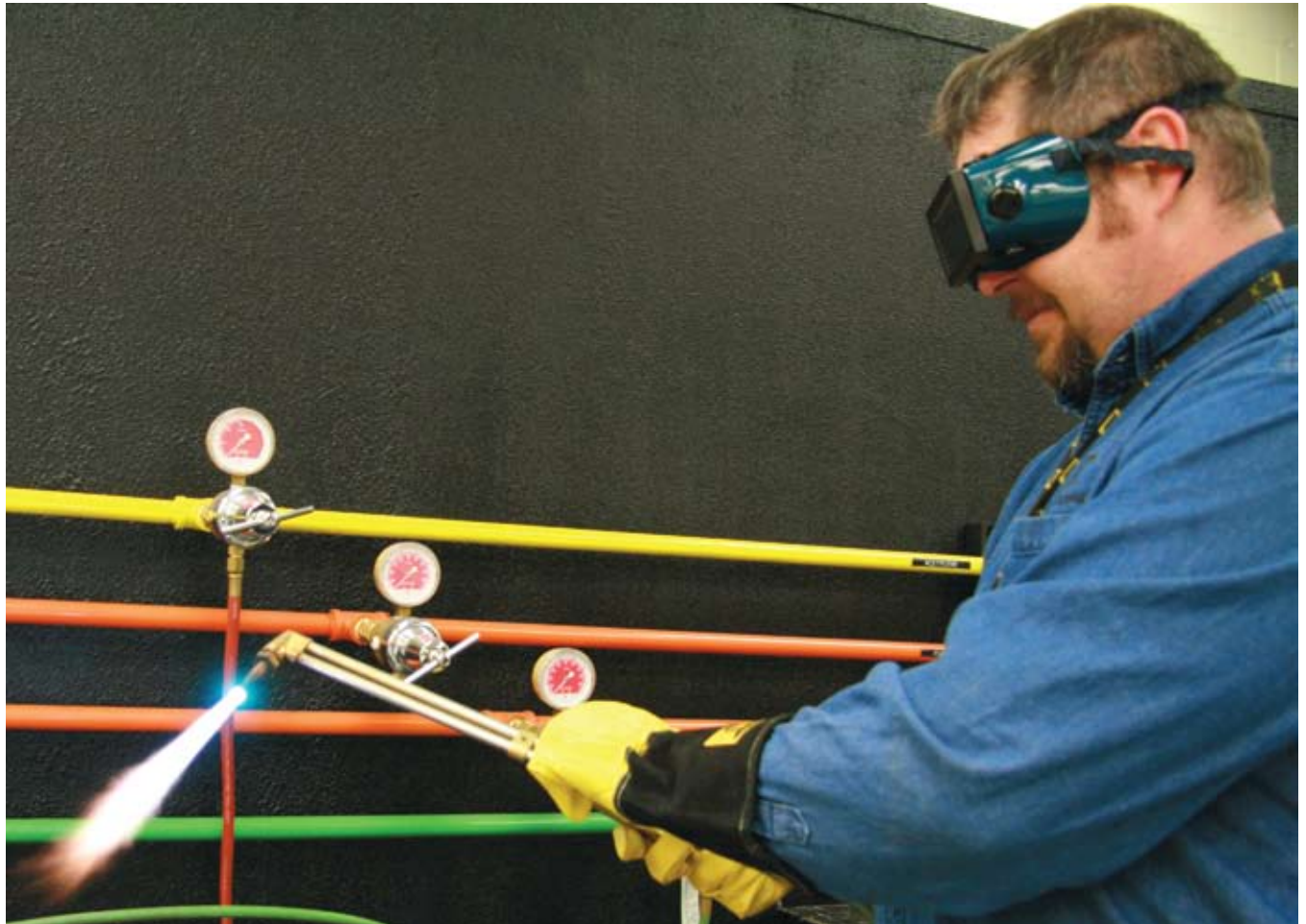
Safety Glasses and Goggles



ESAB Goggle Shade 5

17862

A one-piece goggle with a soft moulded body, indirect ventilation, and a 4" x 1 3/4" lens aperture. Fitted with a Shade 5 filter and will fit over prescription glasses.



Welding Clothing



Welding Jacket

The ESAB Proban/leather jackets are designed for maximum comfort and safety. The sleeves and shoulders are made of durable grade A leather to withstand the exposure to welding spatter. The front and back are made from flame retardant Proban material. The garment features concealed inner pockets, adjustable sleeves, and a stand-up collar. Kevlar® stitched.

Size M	0700 010 301
Size L	0700 010 302
Size XL	0700 010 303
Size XXL	0700 010 304



Welding Trousers

The ESAB Proban/leather trousers are designed for maximum comfort and safety. The front of the legs are reinforced with leather to withstand the spatter and welding sparks. Kevlar® stitched.

Size M	0700 010 333
Size L	0700 010 334
Size XL	0700 010 335
Size XXL	0700 010 336



Welding Jacket

ESAB Welding jackets are made of high quality leather. The front is reinforced in order to withstand mechanical and thermal stress. The jacket is stitched with Kevlar® thread, features a stand-up collar and inside pocket with adjustable wrists.

Size M	0700 010 266
Size L	0700 010 002
Size XL	0700 010 003
Size XXL	0700 010 267



Welding Apron

0700 010 007

The ESAB protective apron distributes the weight effectively. Kevlar® stitched and 42.1" long.

Welding Clothing



ESAB Coverall

Available July 2010

The ESAB black and yellow coverall has been designed to give the welder maximum protection. The garment is made from a highly durable and flame-resistant material. The coverall features an elasticized waist for better comfort and fit, adjustable sleeves and legs, and a covered, protected zipper. The neck is protected by the stand up collar, and knee pads can be fitted.

Size S	0700 010 328
Size M	0700 010 329
Size L	0700 010 330
Size XL	0700 010 331
Size XXL	0700 010 332

For additional information, request product data sheet PPE-1005.

Head Protection



Proban Hood

0000 593 269

Flame resistant head protection which covers the head, neck, and shoulders.



Insulated Helmet Liner

0000 904 378

The insulated helmet liner is worn underneath the welding helmet to offer protection from the elements when working in a cold environment.



Hard Hat for New-Tech™ and Origo™-Tech

The hard hat for New-Tech™ and Origo™-Tech provides the user with the lightest, strongest, and most comfortable helmet available. The helmet is manufactured from ABS material and weighs less than a pound. The head gear is equipped with a ratchet adjustment for easy adjustment and comfort.

Hard Hat Yellow	0700 000 052
Adapter for Hard Hat	0700 000 230

For additional information, request product data sheet PPE-1006.

Welding Gloves MIG/MAG/MMA

All ESAB gloves have a high resistance to heat and offer additional protection against spatter.



Test against mechanical stress such as abrasion, cut, tear, and puncture.



Test for thermal performance such as exposure to an open flame, contact heat, convective heat, radiant heat, small and large splashes of molten metal.



ESAB Curved MIG Glove

These superior new welding gloves from ESAB offer a whole new approach to fit, form, and function. Ergonomically designed to fit the natural curve of the hand, offering increased quality and comfort to the wearer. The MIG glove is made from heavy and fine cut leather, and is lined from hand to cuff. With the curved design, the glove fits the hand perfectly, and also has a flexible wrist area which reduces friction. With welted seams, Kevlar® stitching and reinforced thumb, the gloves are very strong and offer a very high level of protection to the wearer.

Size L

0700 005 043

Size XL

0700 005 040

For additional information, request product data sheet PPE-1007.



Heavy Duty Black

0467 222 007

A welding glove made of black, strong cow-grain leather. High dexterity with Kevlar® stitching ensures that the glove can resist hard mechanical stress. Fully welted.



Heavy Duty Aluminized

0700 005 010

A welding glove with two layers of cowhide capable of withstanding extreme heat. Suitable for tubular wire welding. The facing of aluminium coated PFR rayon reflects 95% of the thermal radiation. The glove is padded with CROMFOflex and is sewn with fourfold Kevlar®. The thumb is angled for high comfort.

For additional information, request product data sheet PPE-1008.

Welding Gloves

Welding Gloves TIG and General Handling



ESAB Curved TIG Glove

These superior new welding gloves from ESAB offer a whole new approach to fit, form, and function. Ergonomically designed to fit the natural curve of the hand, offering increased quality and comfort to the wearer. The TIG glove is made from thin, high quality leather, with improved fit for higher dexterity. The glove is highly durable, with welted seams and Kevlar® stitching. The glove is also extremely lightweight, which increases the comfort to the wearer.

Size L

0700 005 041

Size XL

0700 005 042

For additional information, request product data sheet PPE-1007.



TIG Professional

0701 415 963

A quality TIG gauntlet with a reinforced thumb and 5.1" long leather cuff. The palm is fully lined for increased comfort and protection.

For additional information, request product data sheet PPE-1008.

Magnifying Lenses New-Tech™



The New-Tech™ helmet can be equipped with a magnifying lens. The magnifying lens is fitted from the inside (so no adapter is needed). There are four different diopters available: +1.0 / +1.5 / +2.0 / +2.5.

Diopter +1.0	0700 000 084
Diopter +1.5	0700 000 085
Diopter +2.0	0700 000 086
Diopter +2.5	0700 000 087



ESAB Easy-Lite

0700 014 040

The Easy-Lite is a small but effective light source that can be easily attached to your welding helmet, hard hat, safety glasses, anywhere that additional light is required. The Easy-Lite has also proven to be an excellent tool for adapting to a stainless steel inspection mirror. The bright LED is perfect for highlighting the weld in difficult places where there is insufficient light. The LED is turned on by a simple switch, and the battery has over 50-hours of life.



For additional information, request product data sheet PPE-1009.

Notes

Notes



World leader in welding and cutting technology and systems

ESAB operates at the forefront of welding and cutting technology. Over one hundred years of continuous improvement in products and processes enables us to meet the challenges of technological advances in every sector in which ESAB operates.



Quality and environment standards

Quality and the environment are two key areas of focus. ESAB is one of few international companies to have achieved the new ISO 14001 standard in Environmental

Management Systems across all our global manufacturing facilities.

At ESAB, quality is an ongoing process that is at the heart of all our production processes and facilities worldwide. Multinational manufacturing, local representation and an international network of independent distributors bring the benefits of ESAB quality and unrivaled expertise in materials and processes within reach of all our customers, wherever they are located.



* Includes manufacturing facilities of ESAB North America. A wholly owned subsidiary of Anderson Group Inc.

ESAB Welding & Cutting Products / esabna.com / 1.800.ESAB.123

USA: P.O. Box 100545, 411 South Ebenezer Road, Florence, SC 29501-0545

Canada: 6010 Tomken Road, Mississauga, Ontario L5T-1X9

Mexico: Ave. Diego Diaz de Berlanga, No. 130 Col. Nogalar San Nicolas de los Garza, N.L. 66480 Monterrey, Mexico



FIND US



facebook.com/esabna



twitter.com/esabna



youtube.com/esabweb

